

cleadew
SLi

ADVANCED CARE SYSTEM

Especially for rinsing and
insertion of scleral lenses



cleadew SLi is a unique insertion and rinsing liquid. It is the first liquid with additives specially developed for the rinsing and insertion of scleral lenses.

The added **sodium hyaluronate** improves the wearing comfort and wearing time.

Thanks to the **hypromellose** the lens is easier to insert with a reduced risk of air bubbles.



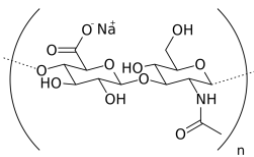
Unique rinsing and insertion solution for scleral lenses

Composition: 8mL x 30 Unidoses

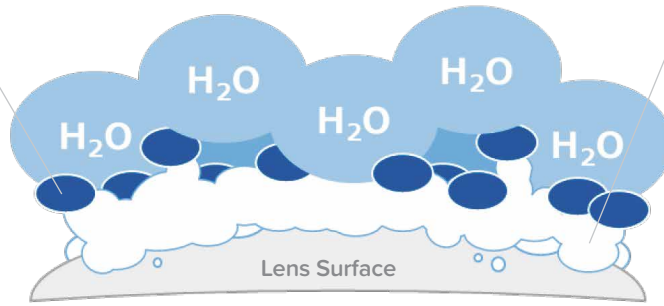
Double Moisturizing Ingredients

<< Moisturizing Mechanism >>

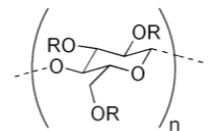
Sodium Hyaluronate



- Has super moisturizing effect.
- Can effectively suppress the hydrophobicity of the lens material itself.



Hypromellose (HPMC)



R = H or CH₃ or CH₂CH(OH)CH₃

- Prolongs the moisturizing effect of sodium hyaluronate.

Effectively keeps water on the lens surface for a long time and make the wearer comfortable!!

Preservative free

If the insertion solution contains preservatives, it can potentially harm corneal epithelial cells and worsen the condition of patients suffering from dry eye.



Damage was observed

<ICLC material>

Product	A	B	C
	Preservative containing	Preservative containing	Preservative free
Cell morphology			
Cell survival rate (%)	20.9 ± 0.2**	78.5 ± 9.3**	100 ± 1.3

Test method: Various diluted insertion solutions were added to human corneal epithelial cells and allowed to stand for 24 hours. Then, cell survival rate and cell morphology were evaluated. **: p<0.01

<Ophtecs data>

cleadew SLi is preservative-free.

As an insertion solution, there is no risk of damaging corneal epithelial cells.

Usage

1

Open the unidose by twisting off the top, taking care to hold it in an upright position.

2

Rinse both sides of the scleral contact lens.



3

Fill the scleral contact lens with **cleadew SLi** before inserting it into the eye.



*Be careful not to leave air bubbles.

4

Discard the unidose after use. Do not re-use!